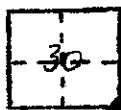


CORNER RECORD

COUNTY OF MADERA T. PS R. 21E MERIDIAN CALIF.

CORNER TYPE: GOV'T CORNER MEANDER RANCHO CONTROL OTHER

CORNER IDENTIFICATION --- DATE OF VISIT 15 Oct. 1975



S.E. Section Corner

30 | 29
31 | 32

CORNER -- LEFT AS FOUND FOUND & TAGGED REESTABLISHED OBLITERATED CORNER
REBUILT

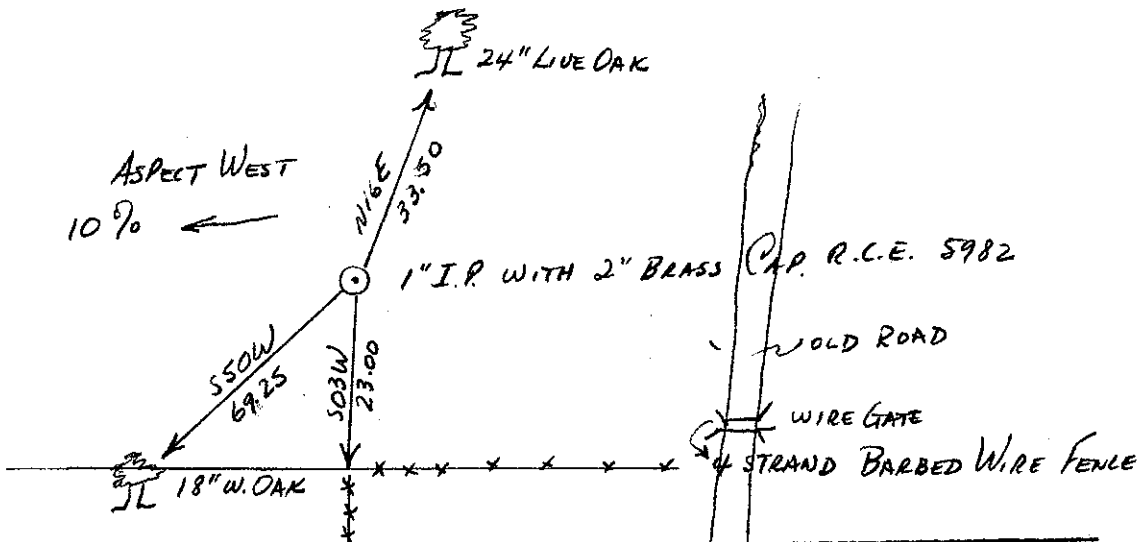
PHYSICAL DESCRIPTION OF CORNER FOUND; EVIDENCE & METHOD USED TO IDENTIFY OR REESTABLISH:
Found 1" Iron Pipe With 2" Brass Cap Stamped For S.E. SECTION 30 BY R.C.E. 5982 OFF FENCE LINES So & EAST.

PHYSICAL DESCRIPTION OF MONUMENTS REBUILT OR PERPETUATED:

LEFT AS FOUND.

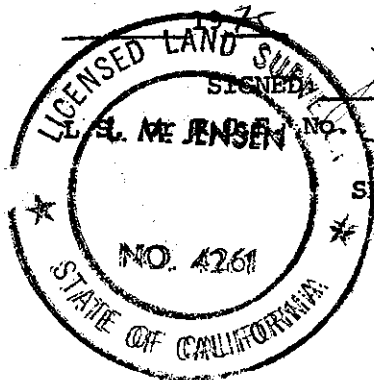
CALIFORNIA COORDINATE SYSTEM ORDER: FIRST SECOND THIRD
STATIONS USED: NOS (USC & GS) STATE COUNTY OTHER STATION _____
STATION _____ ZONE _____ ELEVATION _____ NORTHINGS (Y) _____
EASTINGS (X) _____

SKETCH: (INCLUDE REFERENCE TIE OR WITNESS POINTS, REMARKS AND TOPO OF AREA)



SURVEYOR'S CERTIFICATE

THIS CORNER RECORD WAS PREPARED BY ME OR UNDER MY DIRECTION IN CONFORMANCE WITH THE LAND SURVEYORS ACT ON 15 OCT.



SIGNED L.S. Me Jensen
No. LS-4761

SEAL

COUNTY SURVEYOR'S CERTIFICATE

THE CORNER RECORD WAS RECEIVED 10/17
19 75, EXAMINED AND FILED 10-20-75
BY: A.O. Grate
TITLE: County Engineer

DOCUMENT No. 75-33-04

STATEMENT ON BACK OF SHEET
YES NO