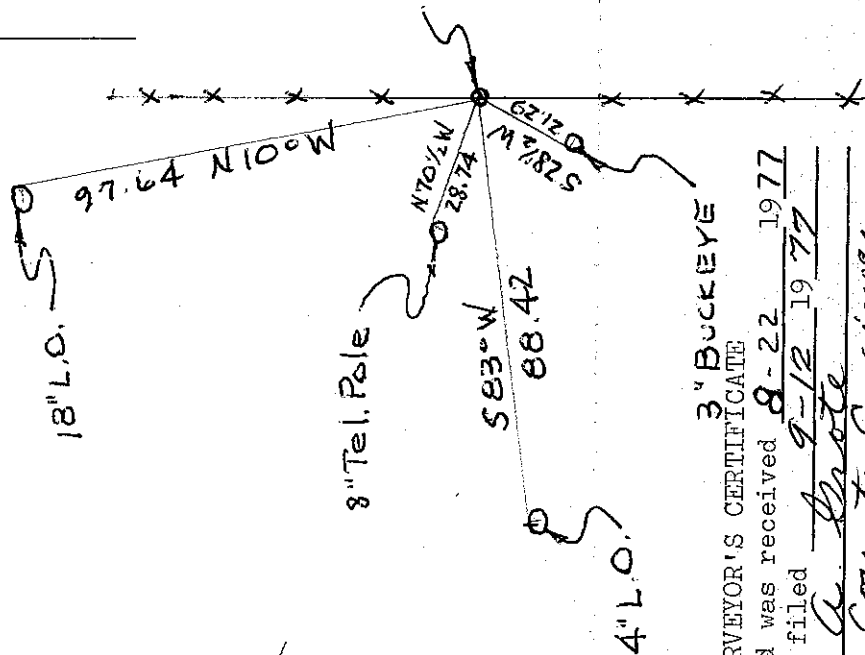
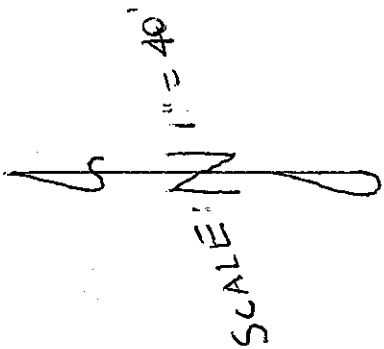
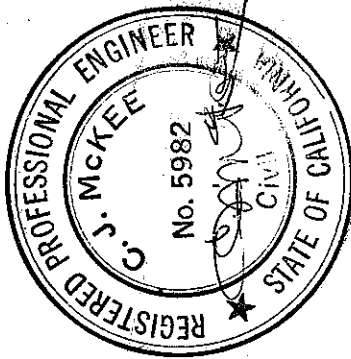


CORNER RECORD TIE
 SECTION 22 TOWNSHIP 7 SOUTH, RANGE 21 EAST, M.D.B. & M.

NAME OF CORNER	DESCRIPTION OF CORNER	DESCRIPTION	TIES	DISTANCE	DIRECTION
NORTHEAST CORNER	3" BRASS DISC STAMPED "A. W. MILLER RE 1674"	18" LIVE OAK, Nail & Tag RCE 5982, E Side		97.64'	N 10° W
		8" Telephone Pole	No. Side	28.74'	N 70 1/2° W
		4" Live Oak	No. Side	88.42'	S 83° W
		3" Buckeye	N. Side	21.29'	S 28 1/2° W



NE COR. SEC. 22
 T. 7S., R. 21E.



SURVEYOR'S CERTIFICATE:

THIS CORNER RECORD TIE WAS PREPARED BY ME OR UNDER MY DIRECTION IN CONFORMANCE WITH THE REQUIREMENTS OF THE LAND SURVEYOR'S ACT IN JULY, 1977

COUNTY SURVEYOR'S CERTIFICATE
 The corner record was received 8-22 1977 and examined and filed 9-12 1977
 By A. Mott
 Title County Engineer

C. J. McKEE
 R.C.E. 5982