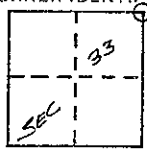


CORNER RECORD

COUNTY OF MADERA T. 7 S. R. 20 E. M.D.B. & MERIDIAN CALIFORNIA
 CORNER TYPE: GOV'T. CORNER MEANDER RANCHO CONTROL OTHER
 CORNER IDENTIFICATION - DATE OF VISIT 11-22 19 80



NE COR SEC 33 7/20

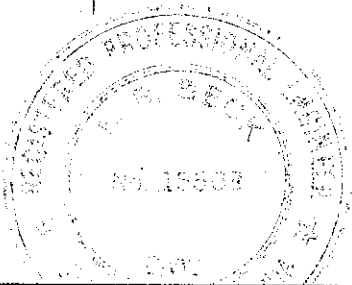
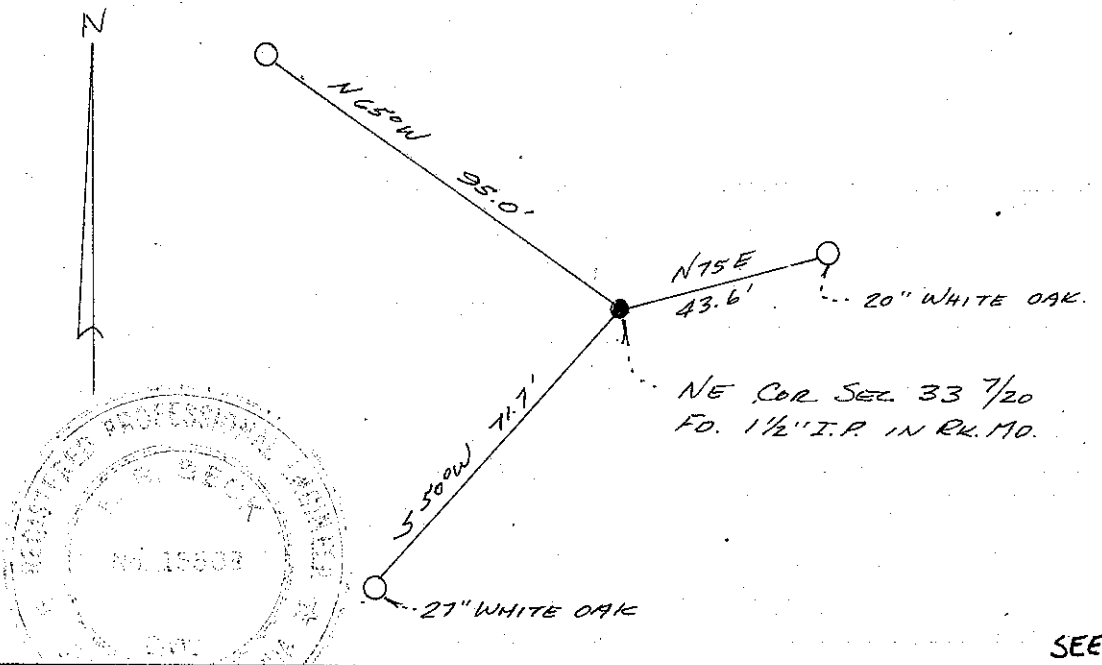
CORNER - LEFT AS FOUND FOUND AND TAGGED REESTABLISHED OBLITERATED CORNER REBUILT

PHYSICAL DESCRIPTION OF CORNER FOUND; EVIDENCE AND METHOD USED TO IDENTIFY OR REESTABLISH
FOUND 1 1/2" IRON PIPE TAGGED L.S. 3722 IN MOUND OF ROCKS.

PHYSICAL DESCRIPTION OF MONUMENTS REBUILT OR PERPETUATED

CALIFORNIA COORDINATE SYSTEM ORDER: FIRST SECOND THIRD
 STATIONS USED: NGS (USC & GS) STATE COUNTY OTHER STATION _____ STATION _____
 ZONE _____ ELEVATION _____ NORTHINGS (Y) _____ EASTINGS (X) _____

SKETCH: (Include reference tie or witness points, remarks end topo of area)



SEE ~~ARS~~ **RS 27/90**

SURVEYOR'S CERTIFICATE
 THIS CORNER RECORD WAS PREPARED BY ME OR UNDER MY DIRECTION IN CONFORMANCE WITH THE LAND SURVEYORS ACT ON 12-16 19 80.

SIGNED: *Eric Beck*
 L.S. or R.C.E. No.: 15603

SEAL

COUNTY SURVEYOR'S CERTIFICATE
 THE CORNER RECORD WAS RECEIVED _____ 19 _____ AND EXAMINED AND FILED _____ 19 _____ BY: *Thomas A. Hanson* TITLE: _____

DOCUMENT No. _____

STATEMENT ON BACK OF SHEET

YES NO