

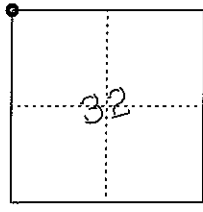
CORNER RECORD

Document Number 51895A

City of _____

County of Madera, California

Brief Legal Description _____



CORNER TYPE

- Government Corner Control
- Meander Property
- Rancho Other
- Date of Survey _____

COORDINATES (OPTIONAL)

N. _____
 E. _____
 Zone _____ Datum _____
 Elevation _____

CORNER -- Left as found Found and tagged Established Reestablished Rebuilt

Identification and type of corner found; Evidence used to identify or procedure used to establish or reestablish the corner:
*Northwest Corner of Section 32, Township 7 South, Range 20 East, Mount Diablo Base and Meridian:
 Found original bearing tree and remains of bearing tree per government notes of survey by Benson and Glover in 1875.
 Set monument at record distances per notes.*

A description of the physical condition of the monument as found and as set or reset:
Set 3/4" iron pipe, up 6", set tag PLS 7061 on September 15, 1994.

SURVEYOR'S STATEMENT

This Corner Record was prepared by me or under my direction in conformance with the Land Surveyors' Act on September 16, 1994.

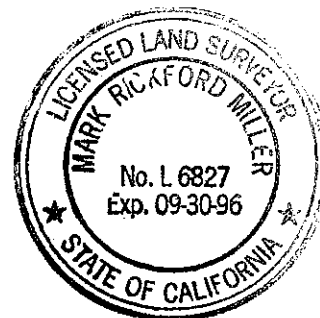
Signed Travis Davis PLS 7061



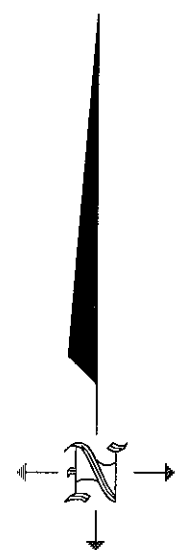
COUNTY SURVEYOR'S STATEMENT

This Corner Record was received 10 MAY 1994 and examined and filed 19 MAY 1994.

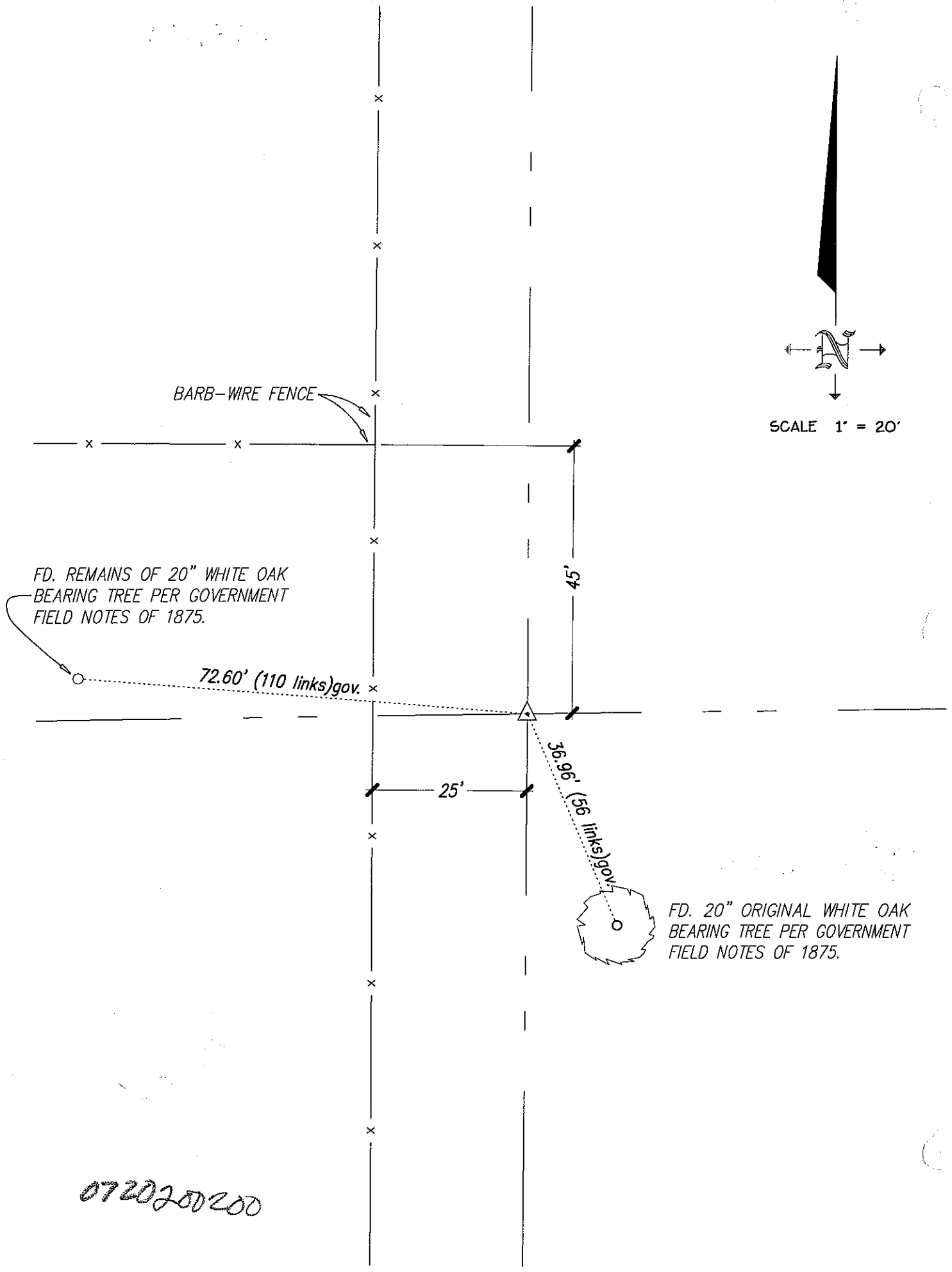
Signed Mark Rickford Miller Title ACTING COUNTY SURVEYOR



by Surveyor's Comment: _____



SCALE 1" = 20'



FD. REMAINS OF 20" WHITE OAK BEARING TREE PER GOVERNMENT FIELD NOTES OF 1875.

72.60' (110 links) gov. x

45'

25'

36.96' (56 links) gov.

FD. 20" ORIGINAL WHITE OAK BEARING TREE PER GOVERNMENT FIELD NOTES OF 1875.

0720200200